

BEE - 52

Bee Food Attractant



GUARANTEED ANALYSIS

Crude Protein.....not less than 8.0%
Crude Fat.....not less than 0.4%
Crude Ash.....not less than 14.0%
Total Sugar as Invert.....not less than 52.0%
Total Fiber.....None
Ingredient Statement:
Whey, Sugar, Sodium, Lignin Sulfonate, Sodium
Naphthalene Sulfonate

GENERAL INFORMATION

BEE-52 is a food supplement formulated with essential food elements for pollinating insects. BEE-52 contains no pheromones. Its attraction is derived through its formulation of natural stimuli which increase the number of bees and pollinating insects in the crop target area. BEE-52 attracts the various bees to the bloom and also holds the pollinating insects in the area for longer periods of time, thus increasing the probability of a more complete pollination.

BEE-52 may be applied when there is moisture on the bloom, in the late evening or early morning. BEE-52 may be applied with most fungicides and other non-insecticide applications.

DO NOT add this product within 10-14 days of any pesticide applications that are toxic to bees or pollinating insects.

Net Contents: 30 Lbs.

Lot #

DIRECTIONS FOR USE

GENERAL USE:

BEE-52 should be applied in multiple applications beginning at 25% bloom and continuing through mid-bloom. Single applications can be done at the higher rates near mid-bloom but may give less than desired yield increase.

SPECIFIC USE:

AVOCADOS: Apply several times during bloom at 7-10 day intervals. Apply 10-12 lbs/acre in 100-200 gallons of water. Can also be applied in 20 gallons of water by aerial application.

DECIDUOUS FRUIT TREES/CITRUS, NUT TREES:

Apply at early and mid-bloom at 5-10 lbs/acre in sufficient water for optimal coverage, 100-150 gallons of water by ground, 10-20 gallons of water by air.

VEGETABLE, MELON, OIL, SEED and FLOWER

CROPS: Apply 2-3 treatments of 5-8 lbs/acre during early to mid-bloom in sufficient water for optimal coverage.

SEED CROPS:

Apply at early, mid-bloom, and 70% bloom at 5 lbs/acre in sufficient water for optimal coverage. In seed alfalfa, apply during each mid-bloom stage throughout growing season.

RASPBERRY, CRANBERRY, BLUEBERRIES:

Apply twice at 5-10 lb. rates during early and mid-bloom in sufficient water for optimal coverage.

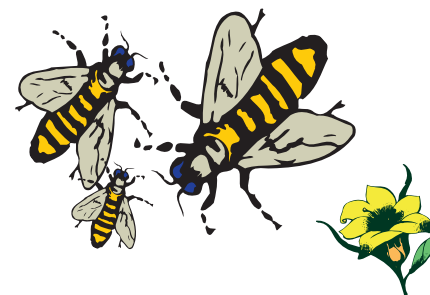
STRAWBERRIES: Apply 5-10 lbs./acre up to 6 times throughout growing season for best yield increases. Begin applications when first bloom appears and use sufficient water for optimal coverage.

CUCUMBERS: Apply 3 times during season by air at 5-8 lbs/acre in 10 gallons of water. Begin applying at 25% bloom and continue until cycle reaches 75% bloom.

CONDITIONS OF SALE:

Seller warrants that the product conforms to its chemical description and is reasonably fit for the purpose stated on the label when used in accordance with directions under normal conditions of use. Weather, crop conditions, timing and methods of application, mixtures with other chemicals not specifically recommended and other influencing factors in the use of this product are beyond the control of the seller. Buyer assumes all risks of use, storage or handling of this material not in strict accordance with directions given herewith.

MANUFACTURED BY:
CUSTOM AG FORMULATORS, INC.
P.O. BOX 26104, FRESNO, CA 93729



SPECIMEN LABEL